

PATIO DOOR REPLACEMENT GUIDE

MARVIN[®]
REPLACEMENT 



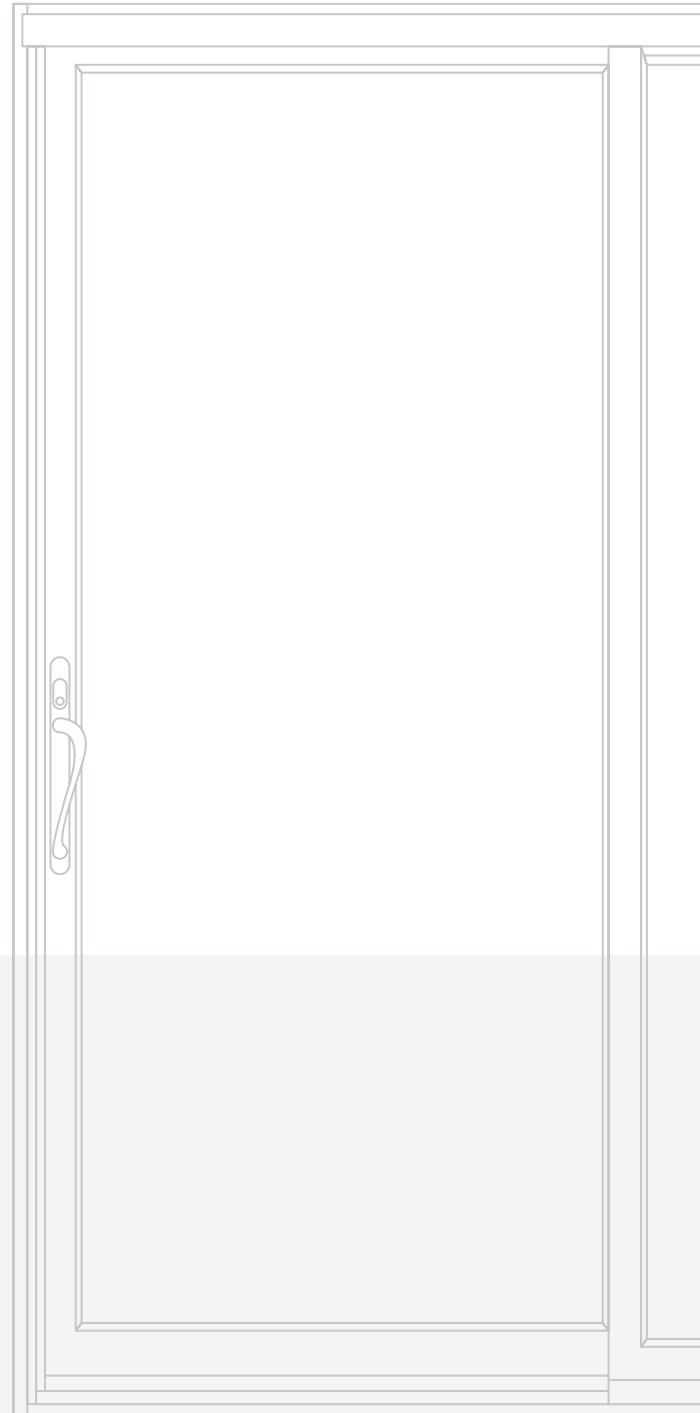
TABLE OF

CONTENTS

- 03 Expert consultation
- 04 Finding your perfect fit
- 05 Seamless installation
- 06 Long-term peace of mind
- 07 Door Replacement Glossary

Bask in more natural light with Marvin Replacement patio doors.

Let Marvin Replacement bring the warmth of sunshine to your home with a new sliding, swinging or folding patio door. Work with Marvin Replacement to make the patio door replacement process simpler – we handle all the details for a smooth experience.



EXPERT

CONSULTATION

Meet with a Marvin Replacement design consultant to start your patio door replacement project. During your consultation, our design consultant will answer all your questions and build a detailed, personalized replacement quote. Consider immediate replacement if you see any of these issues:



Water leaks and staining

Watch out for any signs of water near a patio door.. If there's water in between the door panes, excess condensation, leaks, or water stains, it's time to consider replacing your patio door. Excess moisture can lead to bigger problems like wood rot as well as potentially mold, mildew, and warping.



Poor performance

It's time to consider a new patio door when it begins sliding poorly or hardware breaks down. Marvin Replacement offers a top-hung screen design to prevent poorly sliding doors and multi-point locking systems.



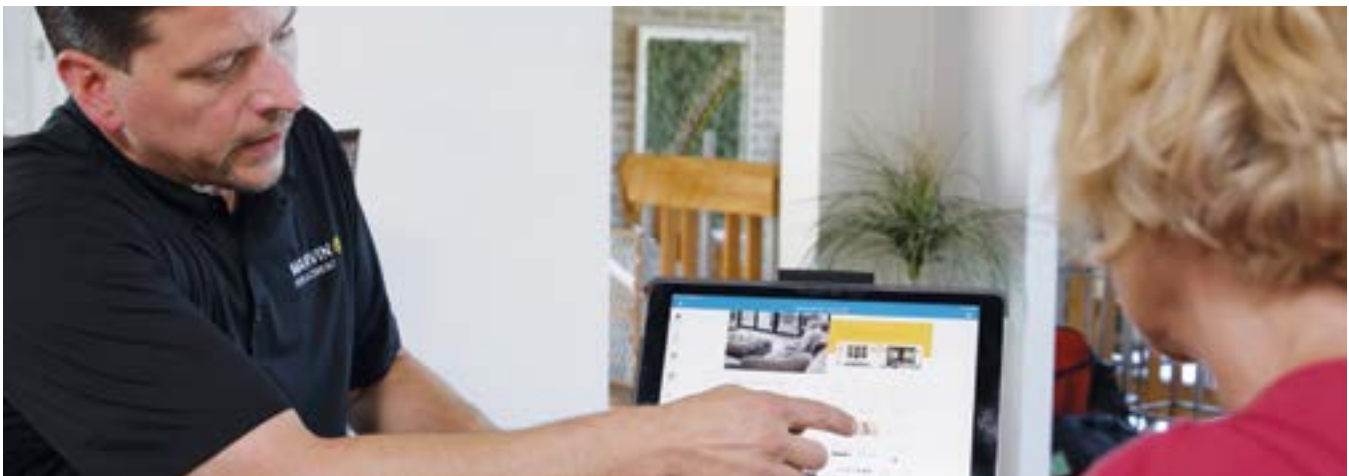
Drafty doors

Poorly functioning patio doors can increase your energy bill and make rooms colder. Marvin Replacement's patio doors solve both problems with energy efficient performance.*



Safety

Doors are the main entry points to your home and broken doors are a major issue. They should be addressed immediately. Replacing broken doors is also important to help keep kids and pets safe.



*Savings reflects installing ENERGY STAR® certified products compared to non-certified when replacing single pane windows based on the average savings among homes in modeled cities. Actual savings will vary by product type, location, method of installation, individual home characteristics, local climate and conditions, utility rates and other factors. https://www.energystar.gov/products/building_products/residential_windows_doors_and_skylights/benefits

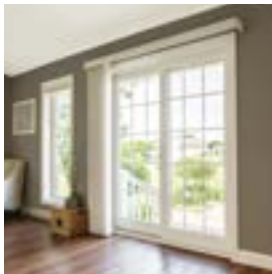
FINDING YOUR

PERFECT FIT

All Marvin Replacement folding, sliding, and swinging patio doors are built with Ultrex® fiberglass to combine serious strength, timeless design, and energy-efficiency with virtually maintenance-free performance.

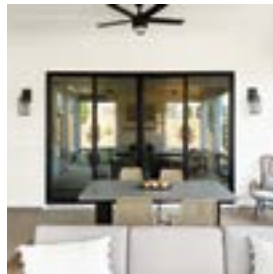
Full-frame flexibility

All doors are installed with full-frame replacements, which requires taking out the existing frame and trim. This door installation method offers the possibility of replacing your existing door with an entirely new style or larger door. With our sizing flexibility, Marvin Replacement custom doors fit nearly any size opening in your home. Your design consultant will help you determine the best solution for your home.



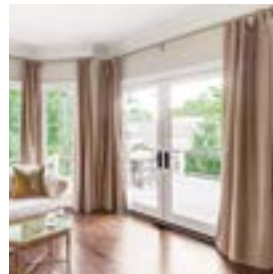
SLIDING FRENCH

Offers the classic look of a French door but with space-saving sliding operation for added convenience



SLIDING PATIO

Features a narrow profile for bigger views and more daylight



INSWING FRENCH

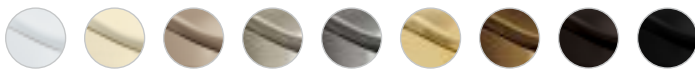
Classic French-style door design that opens inward for uninterrupted views



BI-FOLD

Slide and stack open to maximize views and fresh air

Hardware Finishes



Exterior Colors



Interior Colors + Finishes



Hardware Finishes: (L-R) White, Sierra, Satin Taupe, Satin Nickel, Brushed Chrome, Brass, Antique Brass, Oil Rubbed Bronze, Matte Black

Exterior Colors: (L-R) Stone White, Sierra, Cashmere, Pebble Gray, Bronze, Bahama Brown, Ebony

Interior Colors + Finishes: (L-R) Stone White, Sierra, EverWood®, Bronze, Ebony

Note: Sierra interior is not available with Ebony exterior. Bronze interior is only available with Bronze exterior. Ebony interior is only available with Ebony exterior. Printed color may not be an accurate representation. Ask for color chips.

* Sliding French and Sliding patio doors are available in 2, 3 and 4 panel configurations. Inswing French door is available in 1, 2 and 3 panel configurations.

SEAMLESS

INSTALLATION

**Prep for installation**

Our team will talk you through how to prep your home prior to installation day to give you time to do an assessment of your curtains/blinds, furniture, rugs, and other items that may need to be moved prior to installation day. Be sure to clear access to both the interior and exterior sides of the patio door and disarm any alarms prior to installation. Plan to know who will be home when the installation team arrives and how to keep children and pets safe.

What to expect during installation

Certified Marvin Replacement installers go above and beyond to respect your home while installing windows. They prep the area with floor coverings, collect dust and keep the workspace tidy. Expect the crew to work diligently to minimize disruption and efficiently so you can use your space quicker.

**Post-installation**

Once your new doors are installed, a Marvin Replacement project manager will walk through your home to make sure you're satisfied and show you how to use your new doors.

LONG-TERM**PEACE OF MIND**

When you select Marvin Replacement, you forge a lifelong relationship. Marvin Replacement offers a Limited Lifetime Warranty as well as unparalleled customer service to ensure a lifetime of optimal performance for your Marvin Replacement products.

**Warranty**

Life happens. That's why it's essential to examine the warranty on any replacement project before you complete your purchase.

We proudly offer a Limited Lifetime Warranty. Plus, we offer a two-year service and installation warranty for additional peace of mind. For full details on our Limited Lifetime Warranty, visit [marvinreplacement.com](https://www.marvinreplacement.com).

**Customer service**

We're happy to answer any questions about your new windows at any time. When you have questions – whether about UV protection or window cleaning – you should get quick and clear answers. You can call our team whenever you have questions – we're here to help.

DOOR REPLACEMENT

GLOSSARY

Active Panel

The primary operating panel.

Assembly

Two or more units mullled (attached) together to create one larger grouping.

Bi-Fold Door

A patio door with uni-directional or bi-parting panels that fold and stack tightly to the frame for a wide opening.

Condensation

Moisture that forms on a surface. This could be a result of a difference in temperature between the surface and the air, or high humidity in the home.

Daylight Opening (DLO)

The area of the window or door where light passes through; the width and the height of the visible glass.

Divided Lite / Simulated Divided Lite (SDL)

Decorative bars permanently adhered to glass (Simulated Divided Lites) or between two panes of glass (Grilles Between Glass) to add architectural interest on a window or door.

French Door

A style of door that has wider stiles and rails for a more traditional look on either sliding or swinging doors.

Glazing

Installing glass into windows and doors.

GBGs (Grilles Between the Glass)

Dividers placed between the panes of insulated glass to simulated authentic divided lites. GBGs allow for easier door cleaning with no bars on the exterior or interior surface of the glass.

Hardware

The locks, crank handles and hinges on windows and doors used to operate and secure them.

Head Jamb

The horizontal piece forming the top of the frame on a window or door.

Inactive Panel

Fixed or non-operating portion of the door that holds the glass and is separate from the frame.

Inswing French Door

A French-style patio door with panels that swing open to the interior of the home.

Mull/Mulling

The actual components used to attach two or more windows and/or door units together to form an assembly. The process of attaching two or more window or door units together.

Muntins

Bars that form the decorative grille pattern on a window or door.

Operator

A moving sash, panel or unit.

Panel

Stationary or operating portion of the door that holds the glass and is separate from the frame.

Rails

The horizontal part of a sash, door panel or screen.

Rough Opening

The opening in the wall where a window or door unit is to be installed. Openings are larger than the size of the unit to allow room for insulation.

Screens

A close-mesh woven material of metal or fiberglass attached to an aluminum or wood surround. Screens inhibit entry of insects, yet allow for light, air and unobstructed views.

Side Jamb

The left and right vertical pieces forming the frame on a window or door.

Sill

The lower, horizontal piece of a window or exterior door frame that supports the frame.

Sliding French Door

A French-style patio door available in two, three or four-panel configurations. Left, right and/or center panels operate when grouped in three. When grouped in four, two center panels slide out to the side to reveal a wide walk-through center opening.

Sliding Patio Door

A sliding door featuring a narrow profile for a more contemporary styling and increased daylight opening. Available in configurations similar to the Sliding French Door.

Stationary

A non-operating sash, panel or unit.

Stiles

The upright or vertical members of the framework of a sash, door, screen or other panel assembly.

Ultrex®

A pultruded composite material made of resin and glass fibers with an integrated proprietary finish.

Unit

One single window or door.

Weather-stripping

A strip of resilient material designed to seal the window or door frame in order to reduce air and water infiltration.



Call **1.866.922.2119** or visit us at **MARVINREPLACEMENT.COM** to schedule your free in-home or virtual consultation.

©2021 Marvin Lumber and Cedar Co., LLC. All rights reserved. ®Registered trademark of Marvin Lumber and Cedar Co., LLC. ENERGY STAR® and the ENERGY STAR certification marks are registered U.S. trademarks.
Product specifications subject to change without notice.

December 2021.

MARVIN® 
REPLACEMENT